



**SOWMIYA  
ESTATES**  
established in 1992



# PROPERTY DEVELOPER

“THE BEST INVESTMENT ON EARTH IS EARTH”





**V Anandan**  
**Proprietor**

# ABOUT US

**sowmiya Estates is a privately owned with world class - capablitiy comprising the full range client value chain. We operate an integrated business model delivering single - sources solution for some of the world's most prestigious public and private organization**

SOWMIYA ESTATES is committed to the development of a culture based on excellence plus performance. The Group set stretching targets in all its operation globally and by applying the Four element of excellence plus performance- client focus, Innovation, Responsible Behaviour , People Development - It will achieve its vision to challenge and change the poor practices synonymous with the construction industry and complete alongside world leading businesses.



# Our Motto

“ We are the key to your New Home , Where dream comes Home”



# Our Projects

1992

**OM SHAKTHI NAGAR** in Minjur is a DTCP approved , very first project of sowmiya estates.

1996

**RAGAVENDRA NAGAR** in Kodungaiyur chennai city limit ,a wonderful residential layouts developed by our company.

1996

**SUGANTHAMMAL NAGAR** is another launched on same year in Kodungaiyur.



# Our Projects

1998 , SUBHAM AVENUE in Madhavaram

2000 , NEHRU NAGAR situated in  
Nappalayam Minjur

2010, APS NAGAR GARDEN in Vengal , Periyapalam

2012 , GURU RAGAVENDRA NAGAR in  
Poikaipakkam , Arakkonam

2013 , GURU RAGAVENDRA NAGAR Phase - I  
in Poikaipakkam Arakkonam.

2014 , GURU RAGAVENDRA NAGAR  
Phase -2 in Poikaipakkam Arakkonam.

# Our Projects

2013

**SOWMIYA EXCELLENCE**, is a Villa project launched in 2013 at Madhavaram

2014

**SAI VIGNESH NAGAR** in Jaganthapuram Karanodi is a residential project.

2015

**SAI VIGNESH NAGAR** in Singaperumal Kovil launched on 2011 is a DTCP approved plot, Sai vignesh Nagar is a complete residential plots.





# Our Projects

2016

**SRI LAKSHMINARASIMAHAR NAGAR ,  
situated in Chengalpet its a DTCP  
approved plots.**

2016

**AYYAYU GARDEN which is situated in the  
heart of the chennai city , Madhavaram**

2021

**Royal Divine in Cholavaram redhills is an  
ongoing project of us . With great amenities  
such as gated community , street light park  
area and its CMDA & RERA approved plots.**



# Our Values



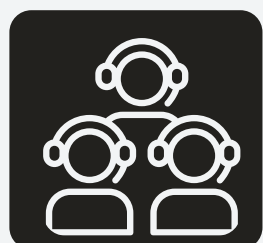
## Integrity

We prioritize client's need and best interest with transparency and Honesty. We live by the rules and Standard we set for our company



## Innovation

As a Company We are passionated about harnessing innovation as a positive force for change. We instill this mindset Culturally in every element of our opertation and the project Delivery



## Customer Satisfaction

we secure and sustain client relarionship by providing great service which met customer satisfaction. Building trust with client is the key part of our client satisfaction.



# RESIDENTIAL PLOTS

## ON GOING PROJECTS

- ROYAL DIVINE , CHOLAVARAM
- GURU RAGAVENDRA NAGAR,  
ARAKKONAM
- SOWMIYA NAGAR  
NANDHIYAMBAKKAM
- EMERALD GARDEN FARM LAND ,  
NELLIKUPPAM

# ROYAL DIVINE

Cholavaram, Redhills



# Farm Land

EMERALD GARDEN , situated in the heart of the city of chennai in Guduvanchery Nellikuppam



# LUXURY FARM LAND

for sale

- Our Farm Land situated in Peaceful & Greenery location with Plantation.
- Plantation such as Coconut tree , Mango tree, Ram seetha and Indian Goosebery.
- Independent Fencing with Gate
- Sq.ft starts from minimum 10000 sq.ft.
- Well Maintained Farm Land with 2 years free maintenance



**Contact :-**  
**Sowmiyaestates**  
 No.94, D-Block, 5th Street, Anna Nagar East, Chennai - 102.  
 Website : [www.sowmiyaestates.in](http://www.sowmiyaestates.in)  
 E-Mail : [info@sowmiyaestates.in](mailto:info@sowmiyaestates.in)  
 Phone : 9884726000, 9003139782





## EMERALD GARDEN

*Ever Green Living Space*

@ GUDUVANCHERY, NELLIKUPPAM

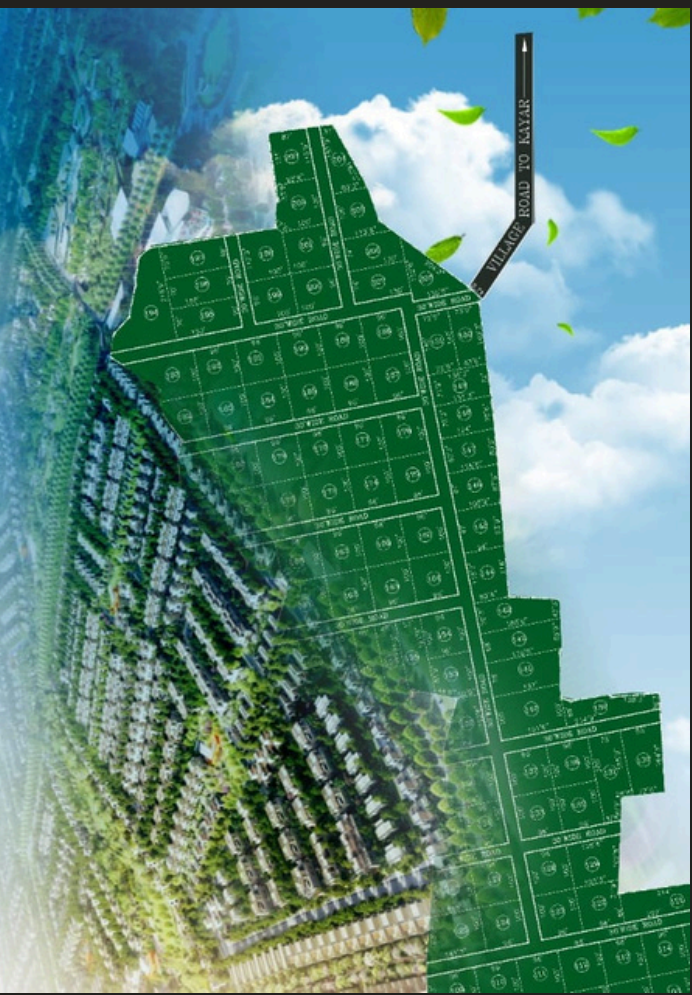


### Key plan



**DISTANCE FROM SITE**

ASWINI AMANYA APARTMENT	- 3.2 km
CEE DEE YES CHENNAI PATTINAM	- 1.7 km
SHRI SATHYA SAI MEDICAL COLLEGE	- 4.6 km
THIRUPORUR	- 10 km
KAYARAMBEDU JUNCTION	- 10 km
VELAMMAL SCHOOL	- 11 km
SRM SCHOOL	- 13 km
GUDUVANCHERY G.S.T. ROAD	- 14 km
URAPAKKAM MOFFUSSIL BUS STAND	- 19 km
IIT MADRAS, THAYUR CAMPUS	- 20 km
VANDALUR ZOO	- 20 Mins
AIRPORT	- 30 Mins
AIRPORT - METRO STATION	- 30 Mins
PROPOSED METRO RAIL STATION	- 20 Mins



### TREES & PLANTATION

*2 Years Free Maintenance*

THE ENTIRE PROJECT GETS COMPLETED WITH LUSH GREEN SURROUNDINGS WHICH MAKES THE AMBIENCE MORE SERENE AND ITS PROXIMITY TO NATURE. IN FACT THE LUSH GREEN THAT ONE LOOKS INTO, GETS HIMSELF DROWNED WITH NATURE AND ONE GETS AN URGE TO REMAIN IN THE AMBIENCE.

### DEVELOPMENT



Coconut plant



Mango plant



Individual Fencing



10 Feet Gate



Guava plant



Amla plant



30 Feet Road



Customized Farm Villas

### INTRODUCTION

SOWMIYA ESTATES SYMBOLIZES THE QUALITY SERVICES AND IS ONE OF THE YOUNGEST ARMS FOR CREATING LAYOUTS AND ALSO CONCEIVING THE BLUEPRINTS FOR THE LAYOUTS. THESE LAYOUTS ABSOLUTELY EMERGE OUT OF THE ENGINEERING AND TECHNOLOGY WHICH GETS ENCAPSULATED IN THE ONGOING CONSTRUCTION SPACE.

IN THE PROCESS OF CONCEIVING THE LAYOUT DESIGNS, WE TEND TO IMPLEMENT AND EQUALLY EXECUTE THE TECH-DRIVEN APPROACH, CONSCIOUS PRACTICES WHILE IMPLEMENTING THE BEST HOMES, BY DOING SO, WE TEND TO ENDEAVOR THE WORTH OF YOUR INVESTMENTS FOR A RIGHT TIME.

SOWMIYA ESTATES WITH 30 YEARS OF EXPERIENCE IN REAL ESTATE INDUSTRY, SOWMIYA STATES HAS BEEN PROVIDING PREMIUM RESIDENTIAL AND COMMERCIAL PROPERTIES TO ITS CUSTOMERS. VALUES YOUR NEEDS AND PROVIDES INDIVIDUAL ATTENTION AND SERVICE YOU DESERVE. WE BELIEVE IN INTEGRITY, COMMITMENT TO EXCELLENCE, A PROFESSIONAL ATTITUDE AND PERSONAL CARE.

SOWMIYA ESTATES SOWMIYA ESTATES VARIETY OF REAL ESTATE SERVICES TO INVESTORS. STARTING FROM RESIDENTIAL PLOTS, APARTMENTS & INDIVIDUAL VILLAS THROUGHOUT TAMILNADU, SOWMIYA ESTATES HAVE GROWN SATISFYING THOUSANDS OF HAPPY CUSTOMERS.





SOWMIYA ESTATES

# Thank You

## Contact Us



9884726000 , 9003139782



sowmiyaestates2000@gmail.com



www.sowmiyaestates.in

*Gerente General*

